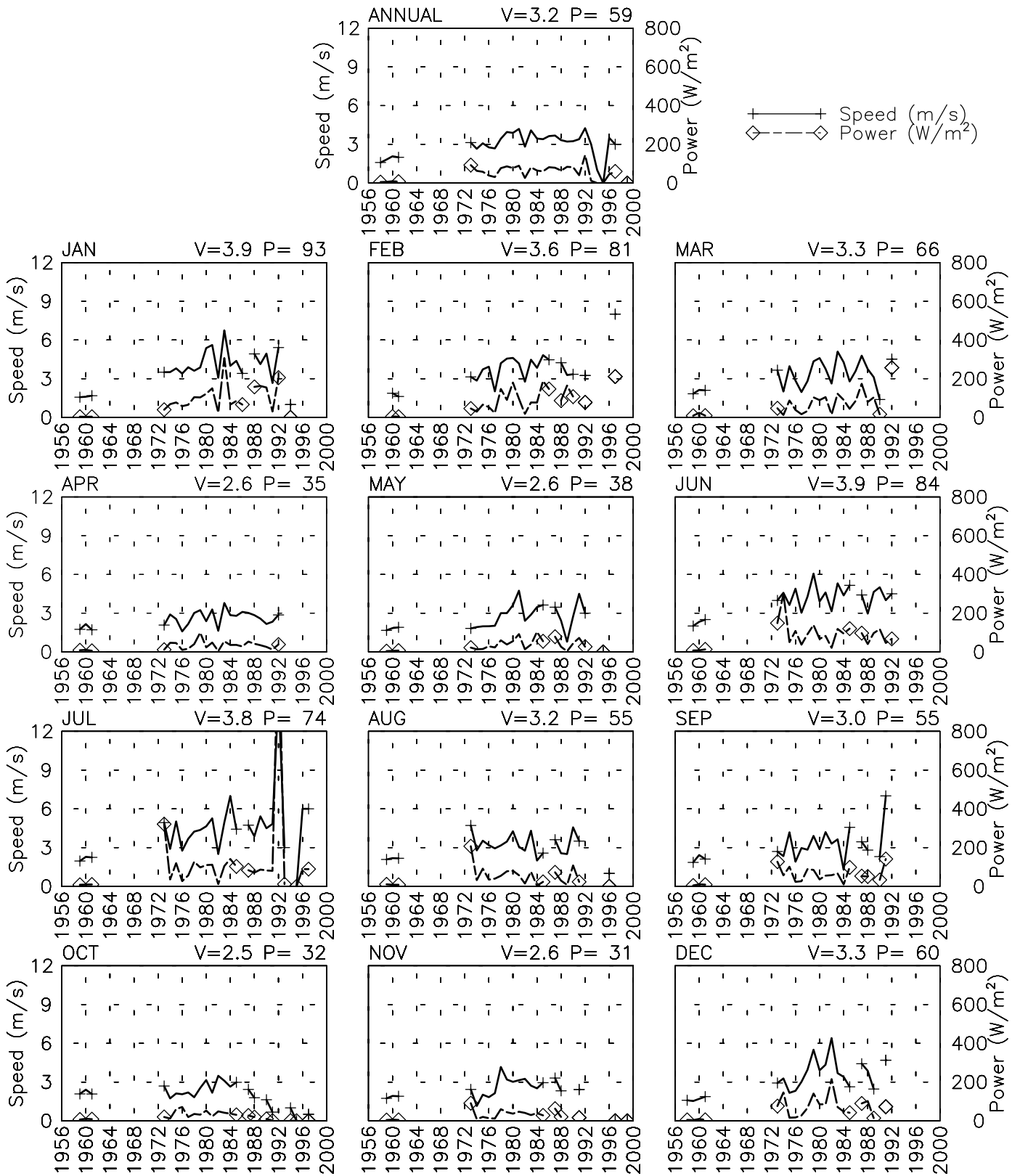


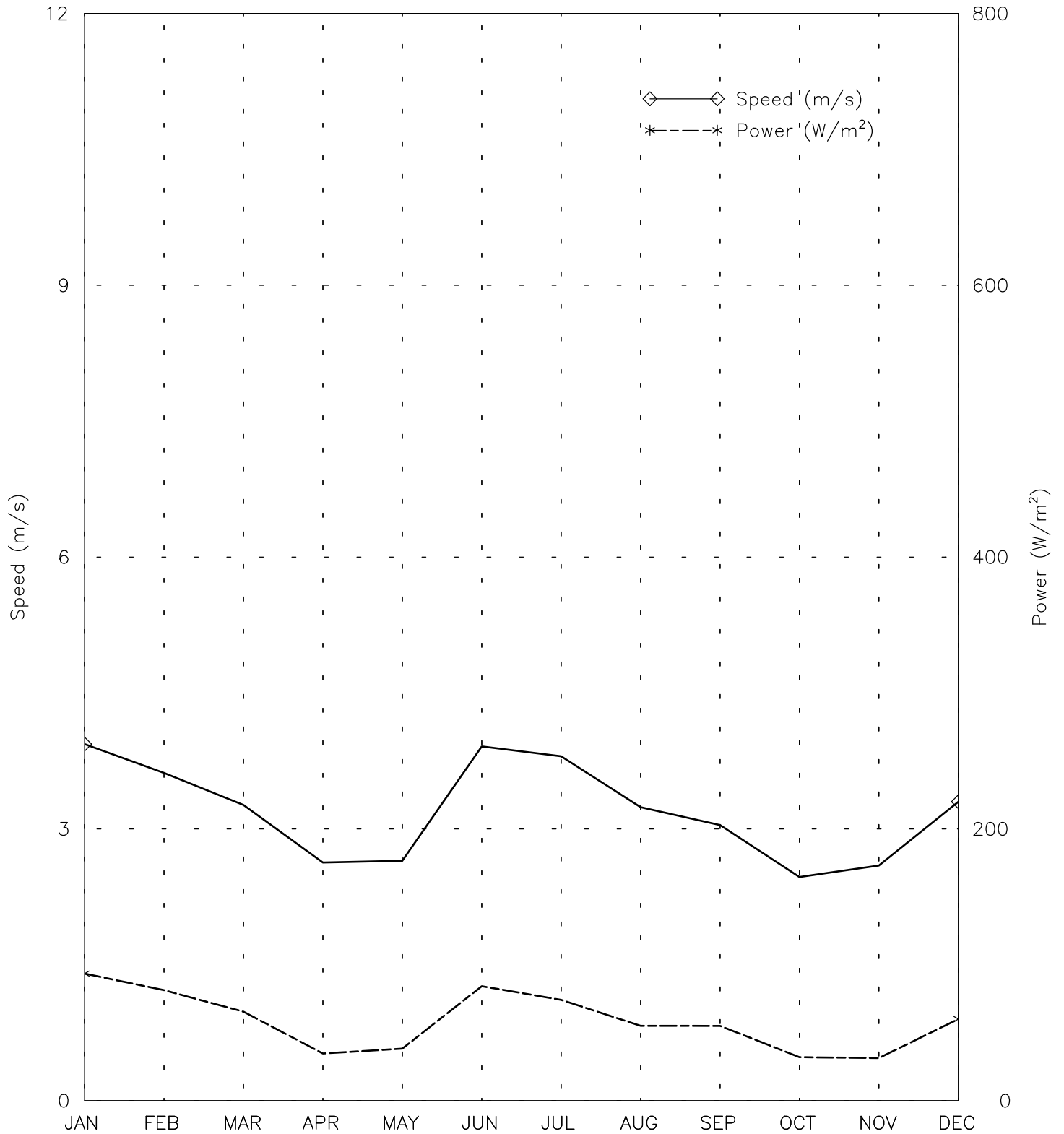
# SPEED AND POWER BY YEAR

NORTH-SALANG AF - 409300  
 35° 19' N 69° 01' E - Elev 3366m \*LST=GMT +5 hours NT= +5  
 12/58-12/61 01/73-11/97 11/99-11/99



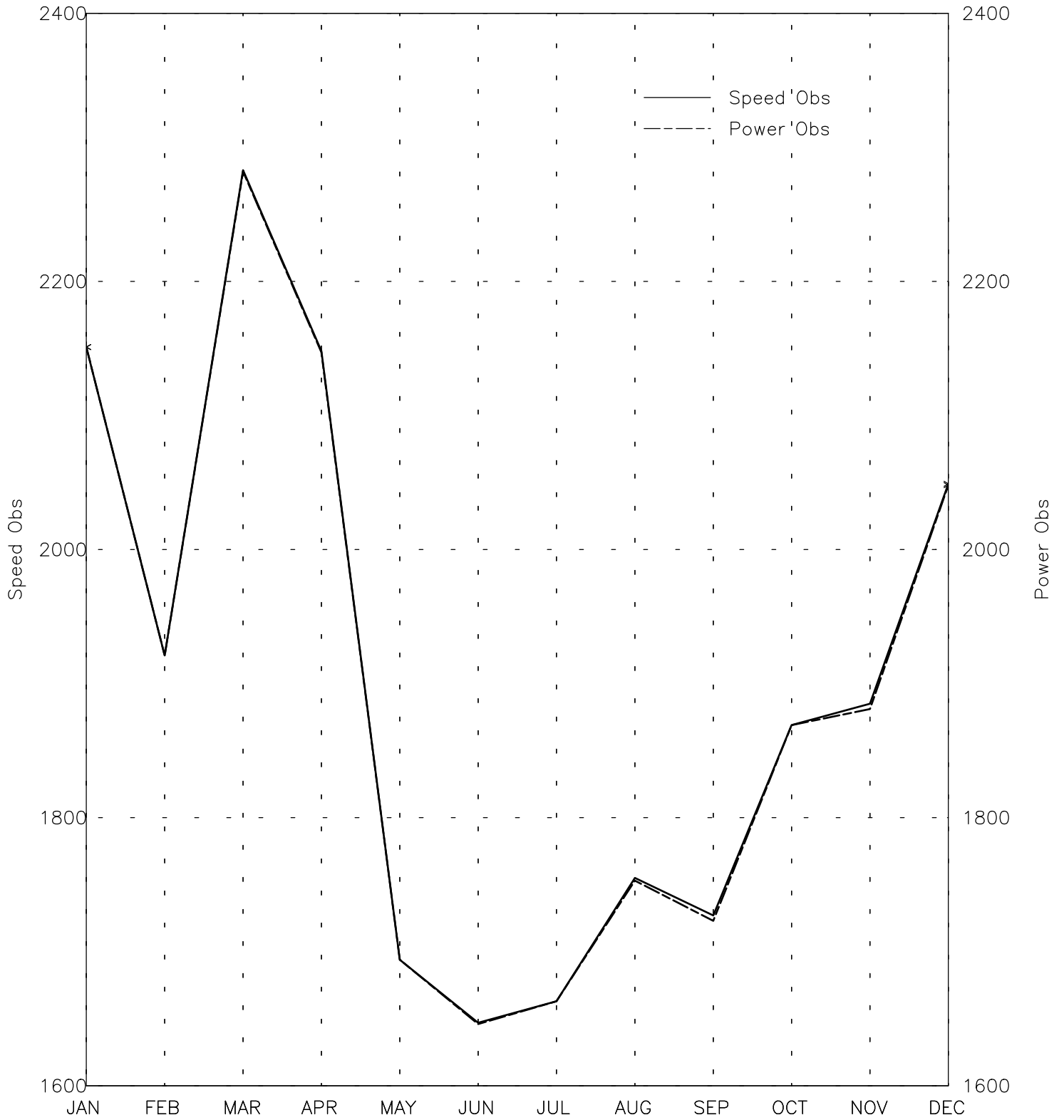
# SPEED AND POWER BY MONTH

NORTH-SALANG AF - 409300  
35° 19' N 69° 01' E - Elev 3366m \*LST=GMT +5 hours NT= +5  
12/58-12/61 01/73-11/97 11/99-11/99



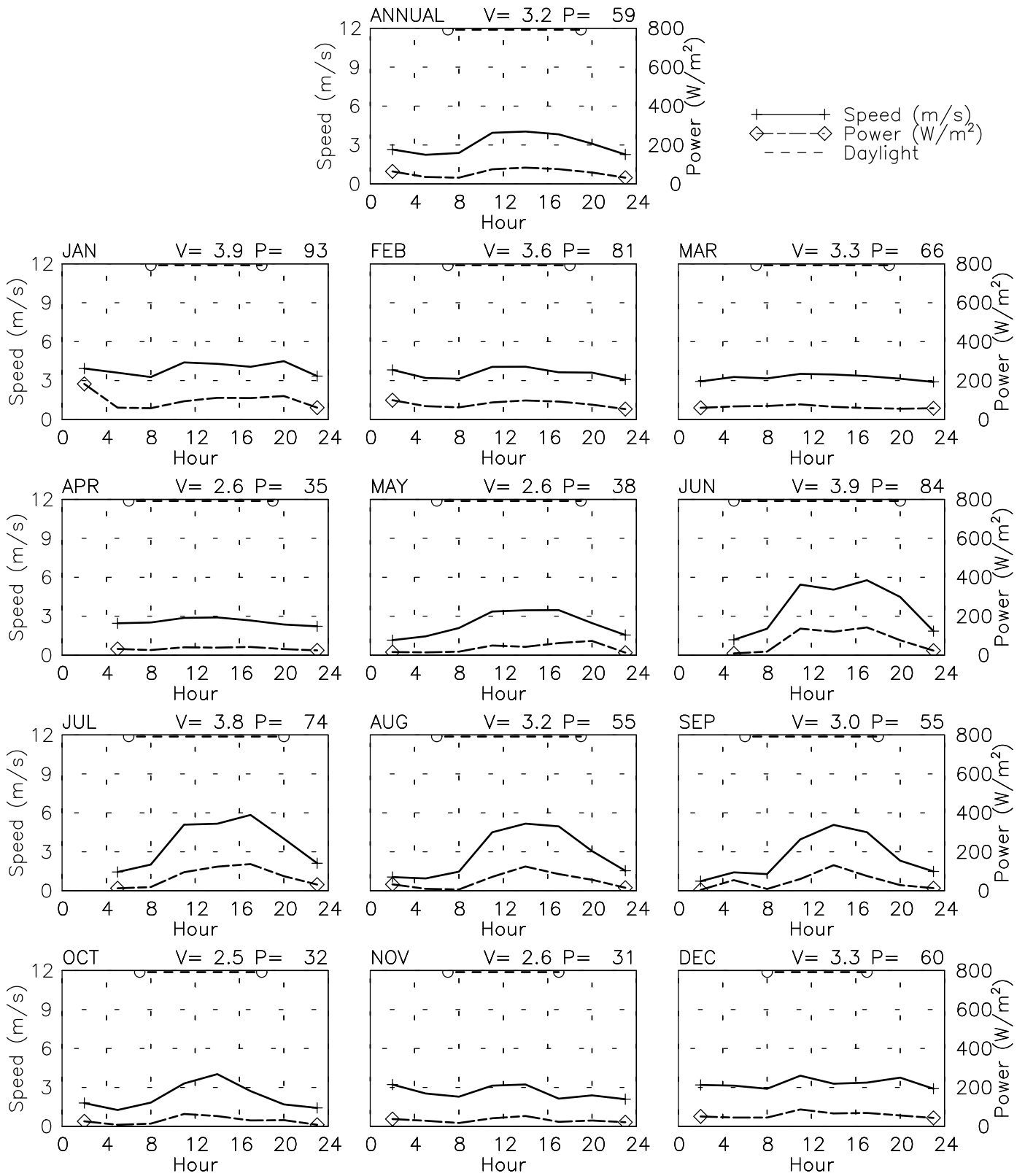
# OBSERVATIONS BY MONTH

NORTH-SALANG AF - 409300  
35° 19' N 69° 01' E - Elev 3366m \*LST=GMT +5 hours NT= +5  
12/58-12/61 01/73-11/97 11/99-11/99



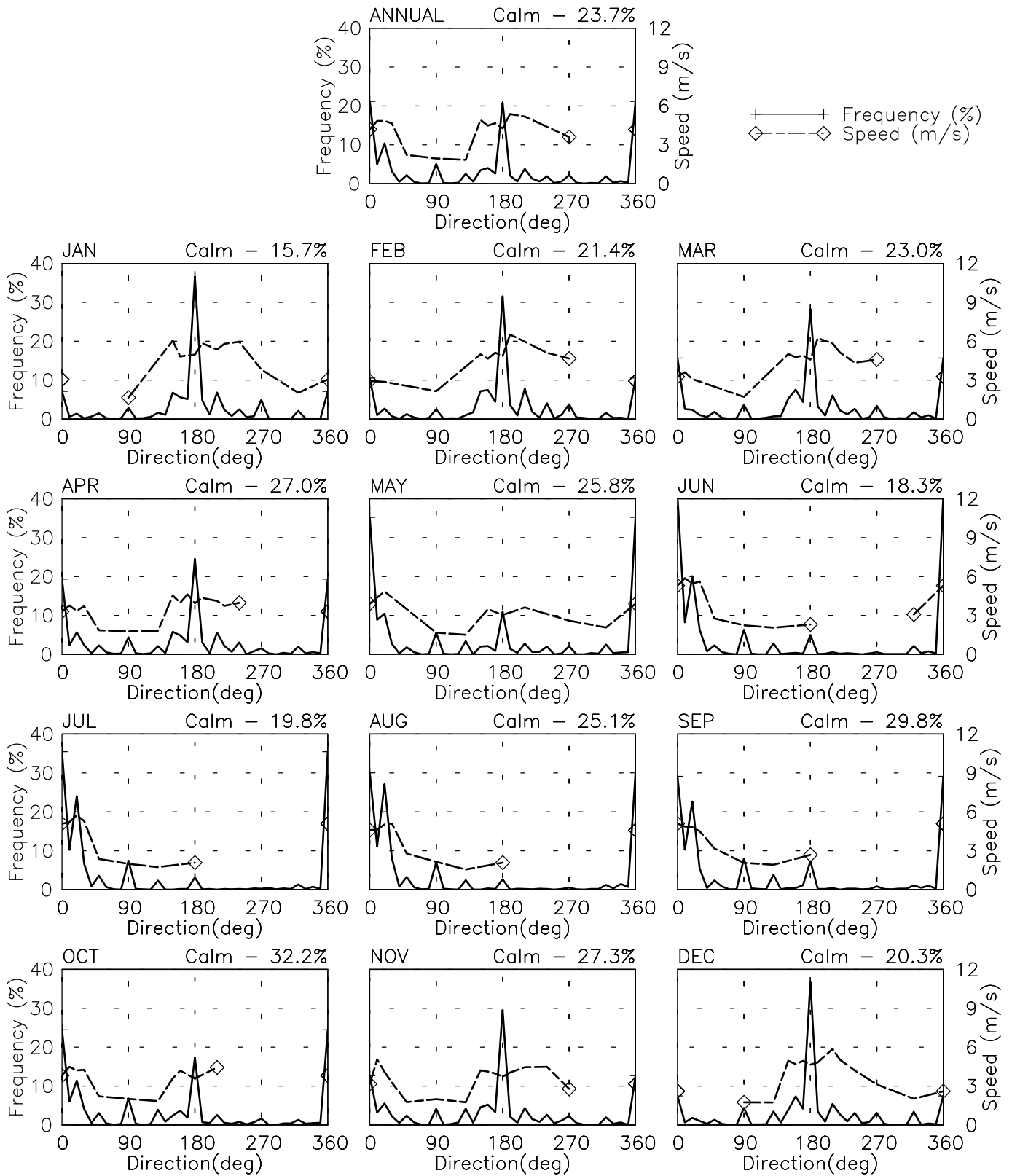
# SPEED AND POWER BY HOUR

NORTH-SALANG      AF - 409300  
 35° 19' N    69° 01' E - Elev 3366m    \*LST=GMT +5 hours    NT= +5  
 12/58-12/61 01/73-11/97 11/99-11/99



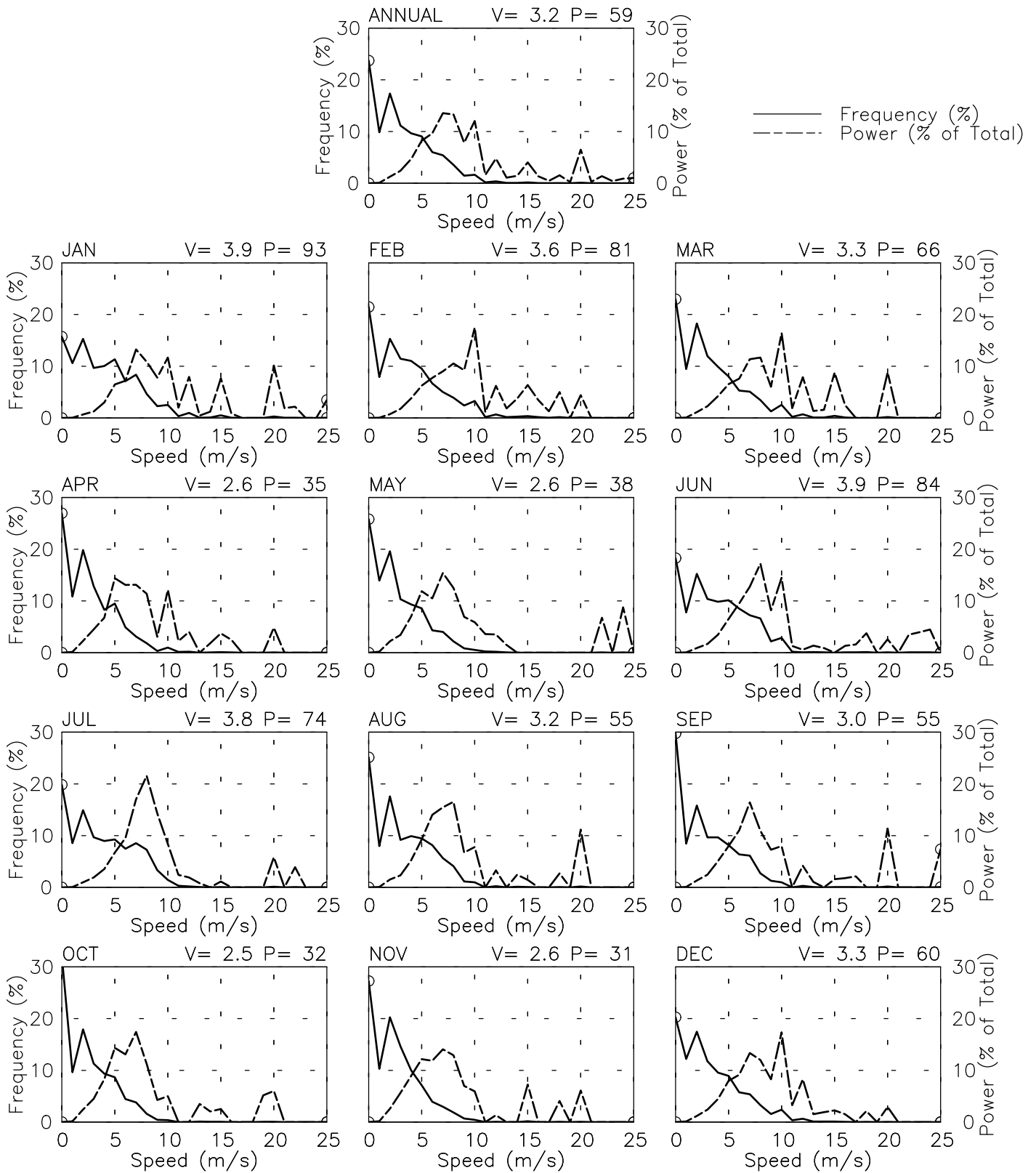
# FREQUENCY AND SPEED BY DIRECTION

NORTH-SALANG AF - 409300  
 35° 19' N 69° 01' E - Elev 3366m \*LST=GMT +5 hours NT= +5  
 12/58-12/61 01/73-11/97 11/99-11/99



# FREQUENCY OF SPEED & PERCENT OF POWER BY SPEED

NORTH-SALANG AF - 409300  
 35° 19' N 69° 01' E - Elev 3366m \*LST=GMT +5 hours NT= +5  
 12/58-12/61 01/73-11/97 11/99-11/99



# PREVAILING DIRECTION & SPEED BY HOUR

NORTH-SALANG AF - 409300  
 35° 19' N 69° 01' E - Elev 3366m \*LST=GMT +5 hours NT= +5  
 12/58-12/61 01/73-11/97 11/99-11/99

